

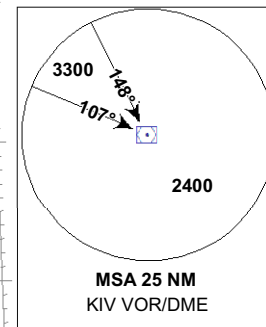
# RNAV (GNSS), VOR/DME OVERLAY STANDARD ARRIVAL CHART - INSTRUMENT (STAR) - ICAO

TRANSITION LEVEL  
BY ATC  
TRANSITION ALTITUDE  
4000FT

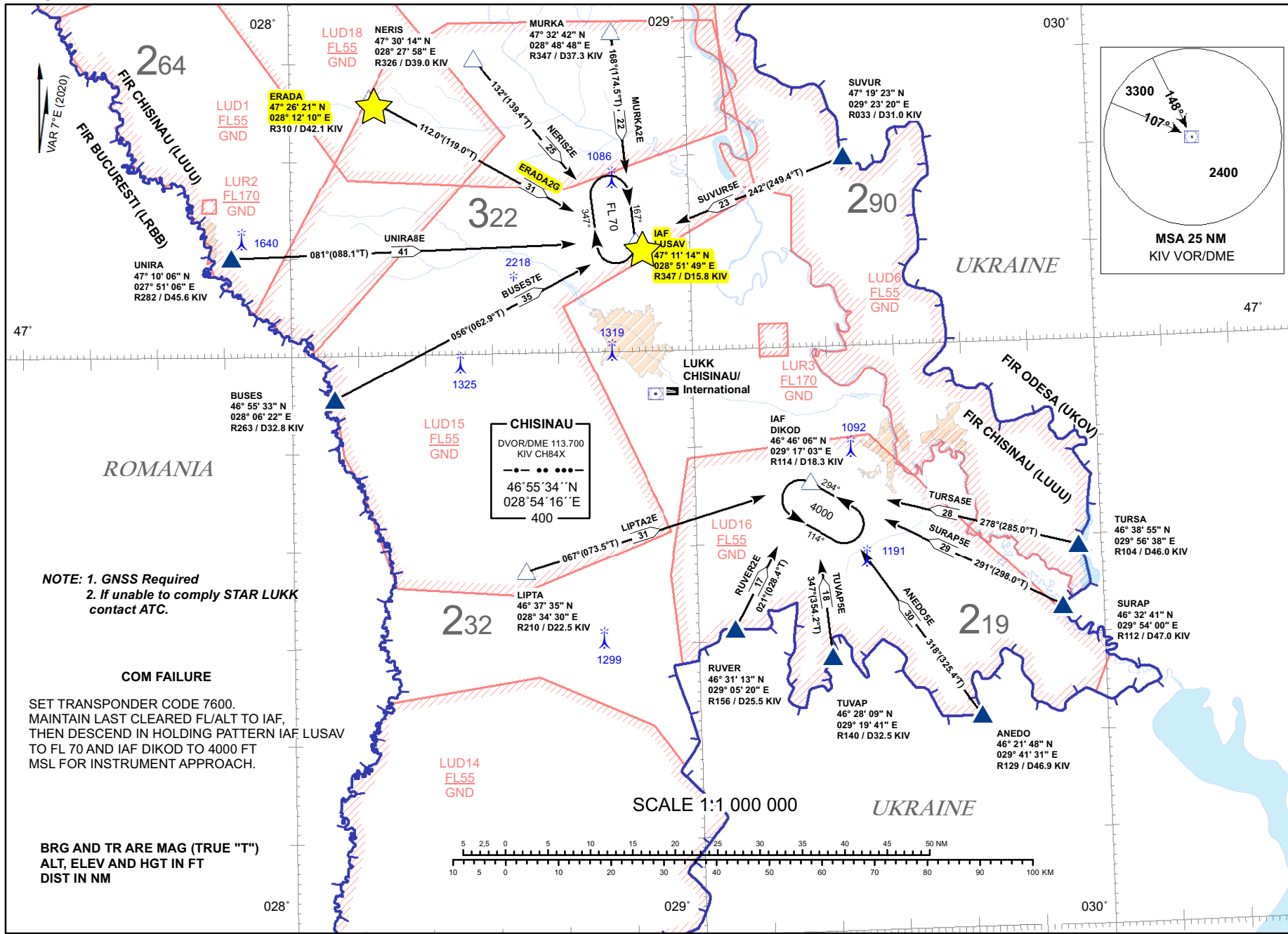
CONTROL 128.975 MHz  
APPROACH 133.300 MHz  
TOWER 118.100 MHz

CHISINAU/Int'l (LUKK)  
RWY 26  
RWY 27

ANEDOSE BUSESTE ERADA2G, LIPTAZE  
MURKAZE NERISZE RUVERZE SURAPSE,  
SUVURSE, TURSASE, TUVAPSE, UNIRASE.



Changes: **New STAR.**



**RNAV (GNSS), VOR/DME OVERLAY  
STANDARD ARRIVAL ROUTES -  
INSTRUMENT (STAR) - ICAO**
**CHISINAU/Intl (LUKK)  
RWY 26  
RWY 27**
**Procedure Coding Table**

Path Terminator	Waypoint			Course/Track MAG (True)	Dist NM	Turn Direction	Constraints		Navigation Specification	Remarks
	Identifier	Flyover	Coordinates				Level	Speed (kt IAS)		
ANEDO5E										
IF	ANEDO	No	462148.0N 0294131.0E	-	-	-	+FL55	-	RNAV 1	
TF	DIKOD	No	464606.0N 0291703.0E	318 (325.4)	29.6	-	+4000FT	-		
BUSES7E										
IF	BUSES	No	465533.0N 0280622.0E	-	-	-	+FL70	-	RNAV 1	
TF	LUSAV	No	471114.0N 0285149.0E	056 (062.9)	34.8	-	+FL70	-		
ERADA2G										
IF	ERADA	No	472621.0N 0281210.0E	-	-	-	+FL70	-	RNAV 1	
TF	LUSAV	No	471114.0N 0285149.0E	112 (119.0)	30.9	-	+FL70	-		
LIPTA2E										
IF	LIPTA	No	463735.0N 0283430.0E	-	-	-	+FL55	-	RNAV 1	
TF	DIKOD	No	464606.0N 0291703.0E	067 (073.5)	30.5	-	+4000FT	-		
MURKA2E										
IF	MURKA	No	473242.0N 0284848.0E	-	-	-	+FL70	-	RNAV 1	
TF	LUSAV	No	471114.0N 0285149.0E	168 (174.5)	21.6	-	+FL70	-		
NERIS2E										
IF	NERIS	No	473014.0N 0282758.0E	-	-	-	+FL70	-	RNAV 1	
TF	LUSAV	No	471114.0N 0285149.0E	132 (139.4)	25.0	-	+FL70	-		
RUVER2E										
IF	RUVER	No	463113.0N 0290520.0E	-	-	-	+FL55	-	RNAV 1	
TF	DIKOD	No	464606.0N 0291703.0E	021 (028.4)	16.9	-	+4000FT	-		
SURAP5E										
IF	SURAP	No	463241.0N 0295400.0E	-	-	-	+FL55	-	RNAV 1	
TF	DIKOD	No	464606.0N 0291703.0E	291 (298.0)	28.8	-	+4000FT	-		
SUVUR5E										
IF	SUVUR	No	471923.0N 0292320.0E	-	-	-	+FL70	-	RNAV 1	
TF	LUSAV	No	471114.0N 0285149.0E	242 (249.4)	23.0	-	+FL70	-		
TURSA5E										
IF	TURSA	No	463855.0N 0295638.0E	-	-	-	+FL60	-	RNAV 1	
TF	DIKOD	No	464606.0N 0291703.0E	278 (285.0)	28.2	-	+4000FT	-		
TUVAP5E										
IF	TUVAP	No	462809.0N 0291941.0E	-	-	-	+FL55	-	RNAV 1	
TF	DIKOD	No	464606.0N 0291703.0E	347 (354.2)	18.0	-	+4000FT	-		
UNIRA8E										
IF	UNIRA	No	471006.0N 0275106.0E	-	-	-	+FL70	-	RNAV 1	
TF	LUSAV	No	471114.0N 0285149.0E	081 (088.1)	41.4	-	+FL70	-		